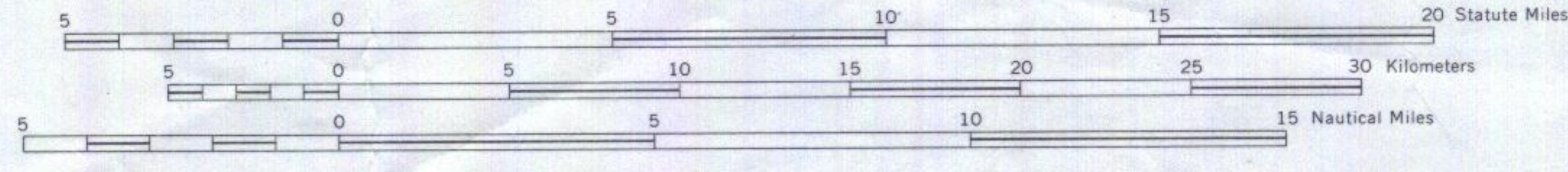


TMA 864
27
865
37
1030
41
32
38

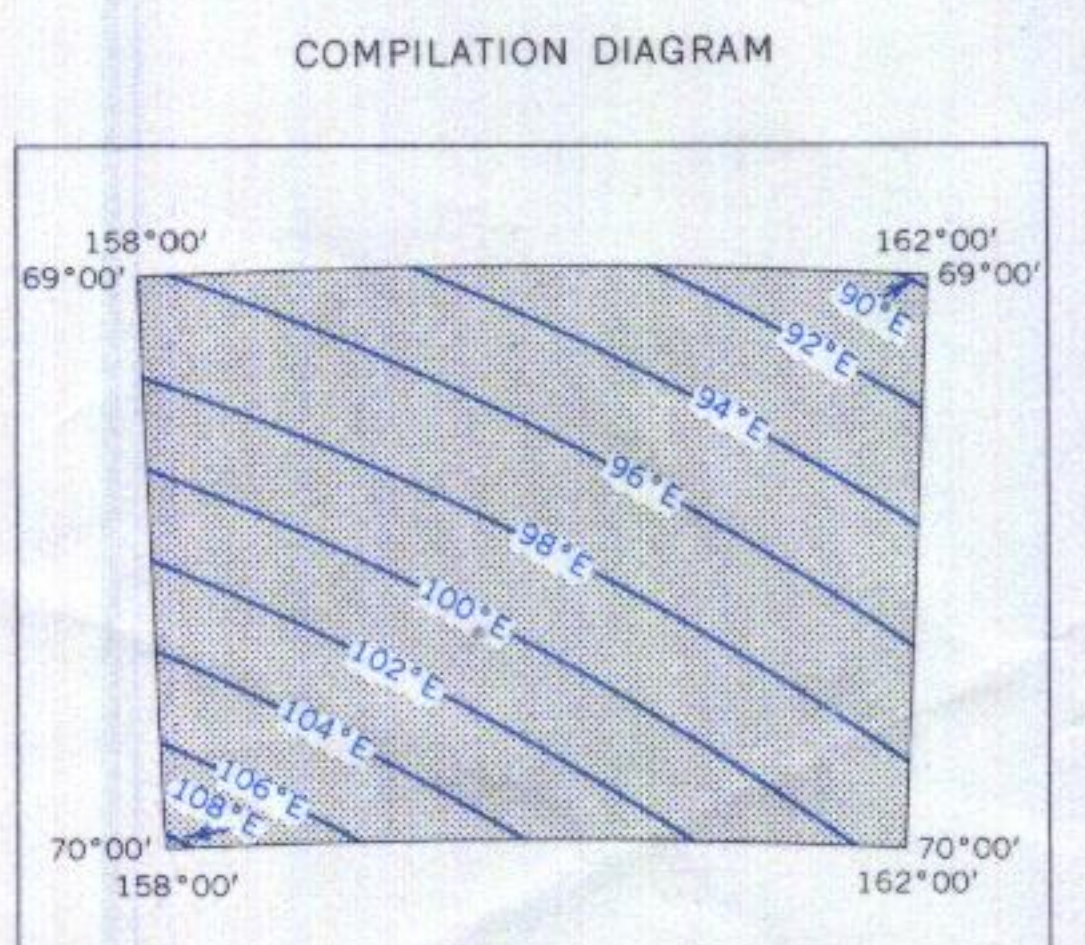
TMA 864
NOV 2 61

SCALE 1:250,000



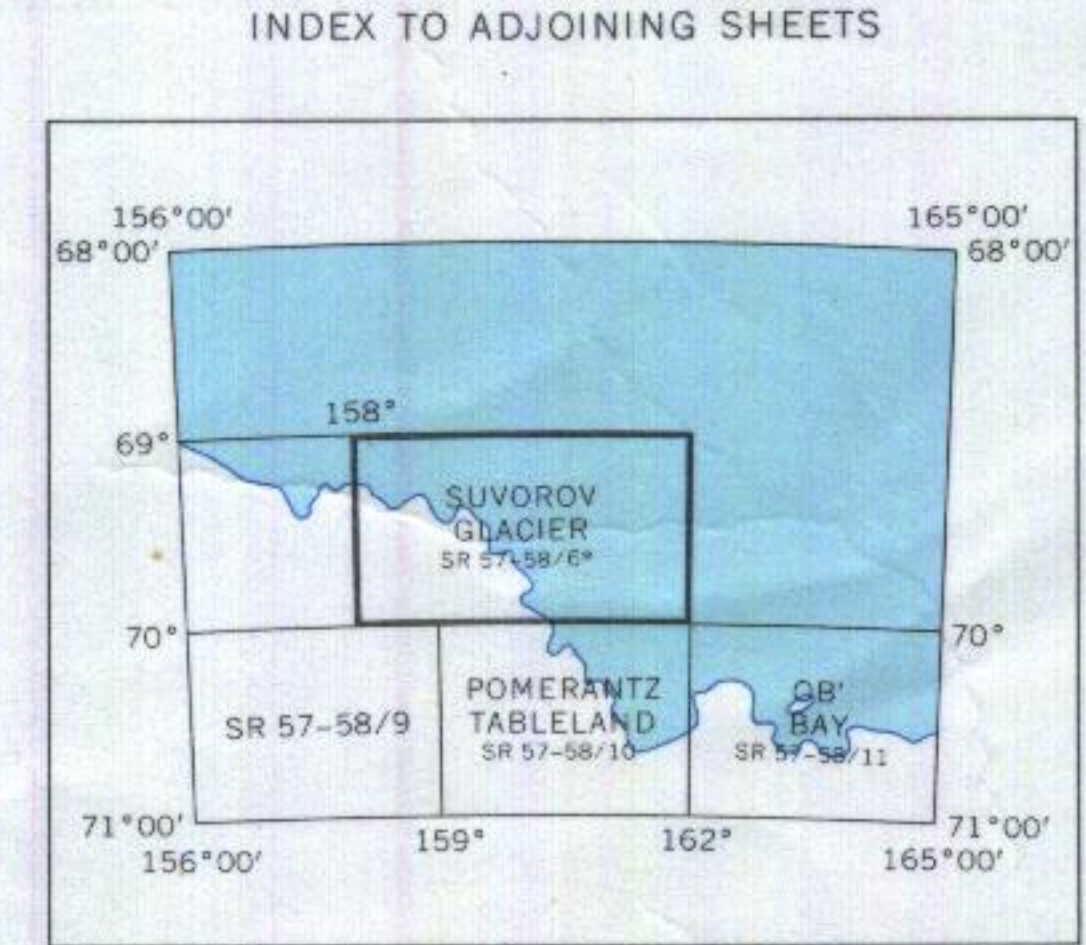
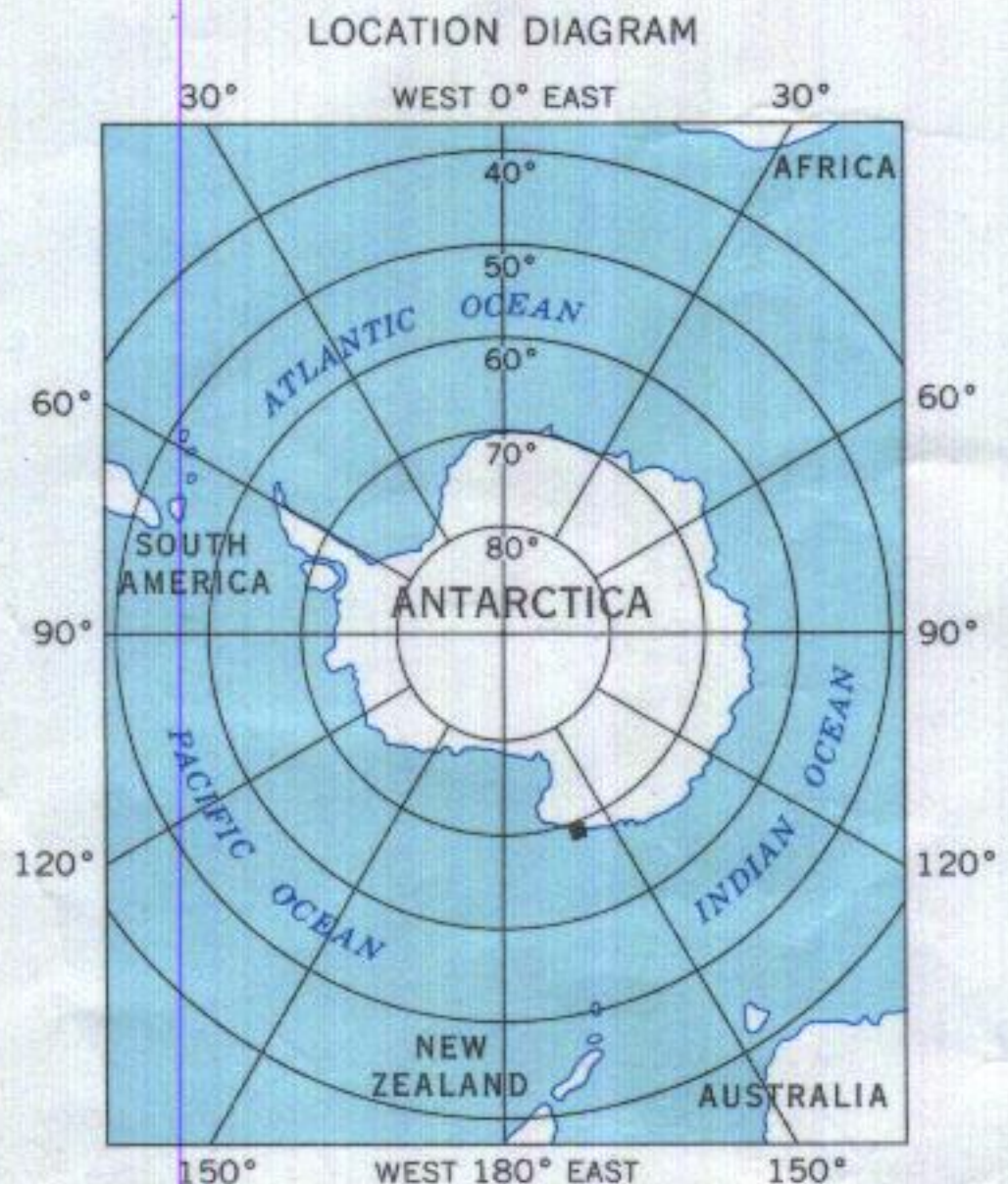
Lambert Conformal Conic Projection—Standard Parallels 68°40' and 71°20'
CONTOUR INTERVAL 200 METERS—DATUM IS MEAN SEA LEVEL
Elevations and depths in meters

Mapped, edited, and published by the U.S. Geological Survey in cooperation with the National Science Foundation
Control by U.S. Geological Survey
Compiled in 1968 from U.S. Navy tricamera aerial photographs taken 1961, 1962, and 1964
Hydrographic data by U.S. Naval Oceanographic Office
This information is not intended for navigational purposes
Names approved by U.S. Board on Geographic Names
Absence of the crevasse symbol does not necessarily indicate a crevasse-free area



Photogrammetric compilation
Isogonic lines compiled from U.S.N.O.C. Chart 1706 S, 1965

LEGEND	
Contour lines (definite)	Ice area
Contour lines (approximate)	Ice-free area
Contour lines (conjectural)	
Cliff or escarpment	
Steep slope	
Small hillocks	
Intersected control stations	
Photogrammetric elevations	
Ice thickness	
Astro control station	Signal
Survey control stations	
Traverse routes with spot height	
Moraine	
Glacier	
Crevasse	
Coastline under ice (definite; indefinite)	
Ice shelf	
Icebergs	
Fast or bay ice	



Sheet numbering system based on International Map of the World