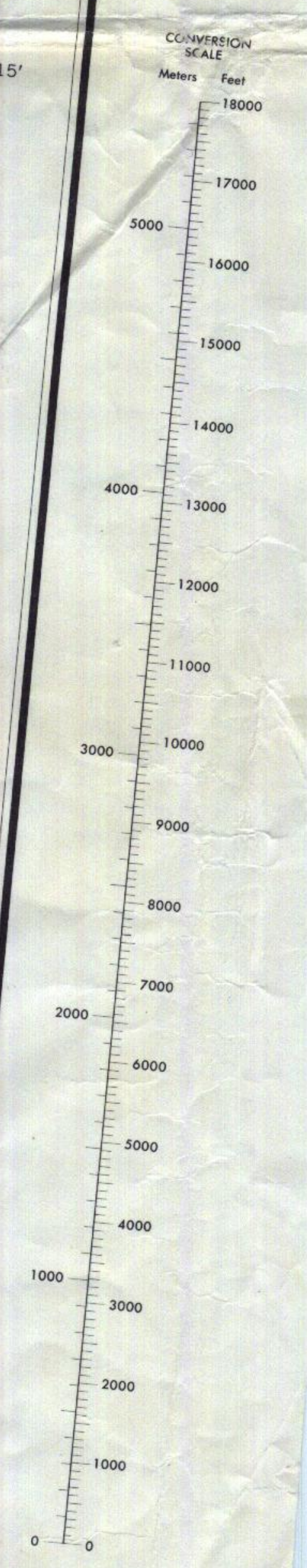
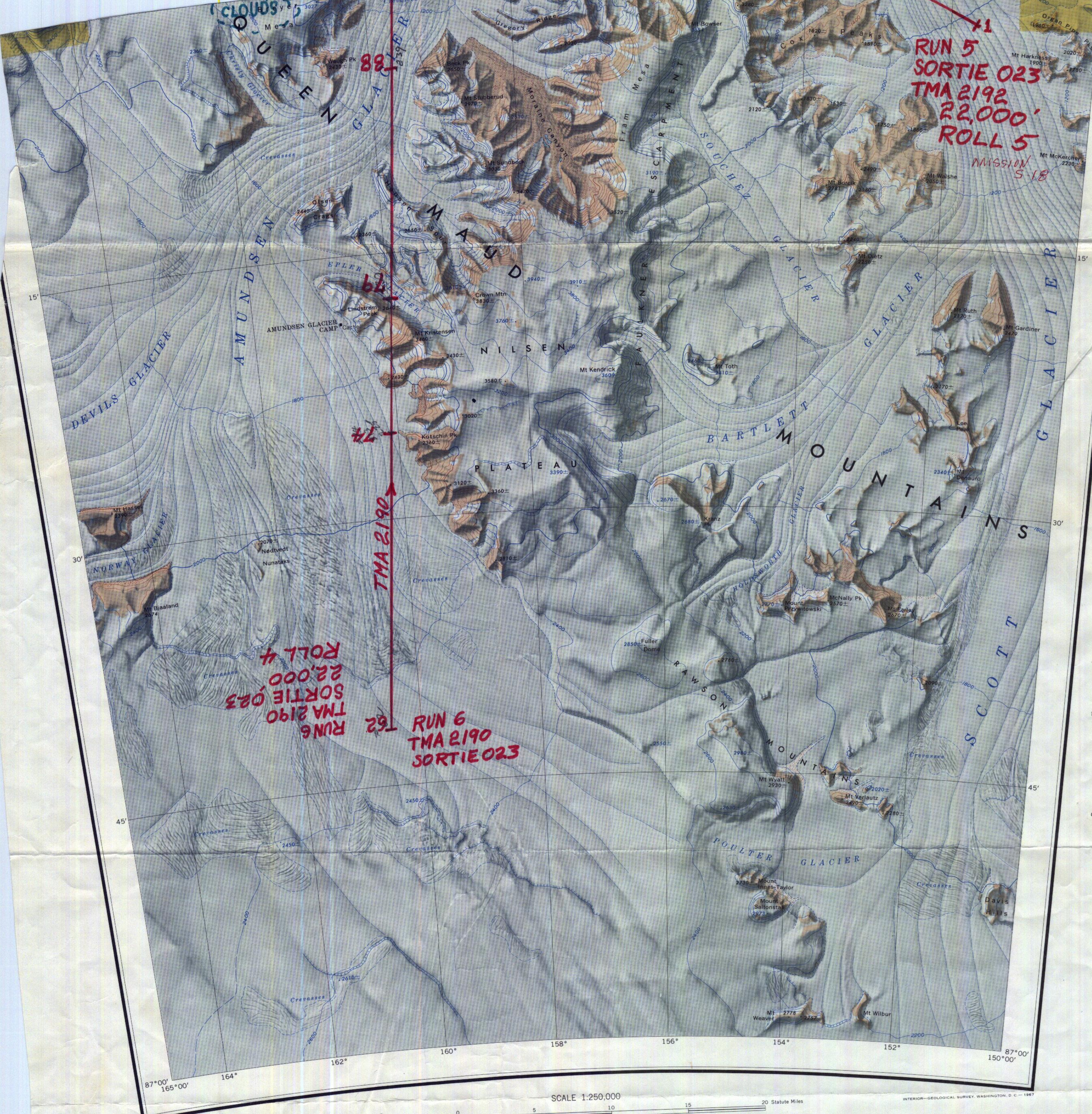


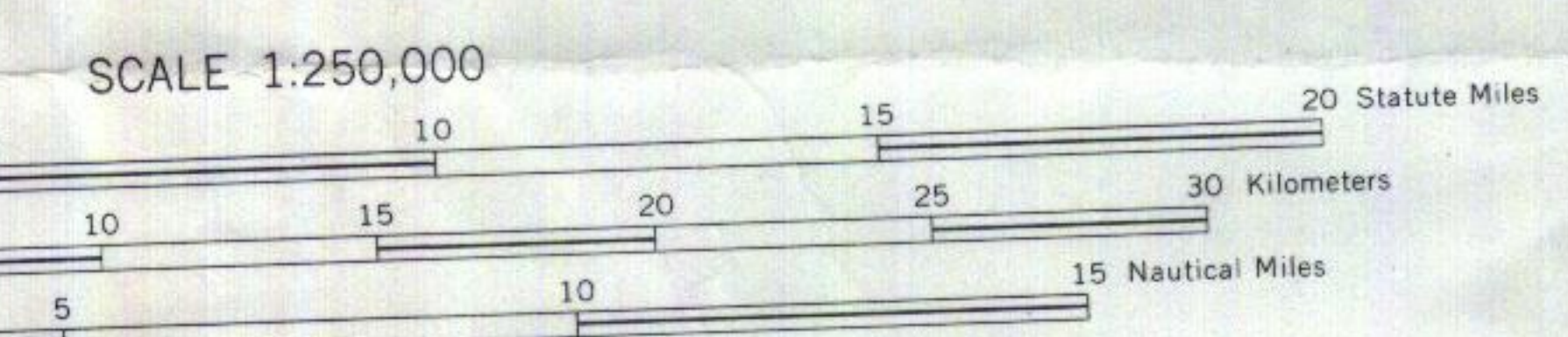
NILSEN PLATEAU  
SV 1-10/10

**71**  
**RUN 5**  
**SORTIE 023**  
**TMA 2192**  
**22,000'**  
**ROLL 5**  
**MISSION S-18**



**74**  
**RUN 6**  
**TMA 2190**  
**22,000'**  
**ROLL 4**  
**MISSION S-18**

**72**  
**RUN 6**  
**TMA 2190**  
**22,000'**  
**ROLL 4**  
**MISSION S-18**



INTERIOR—GEOLOGICAL SURVEY, WASHINGTON, D. C.—1967

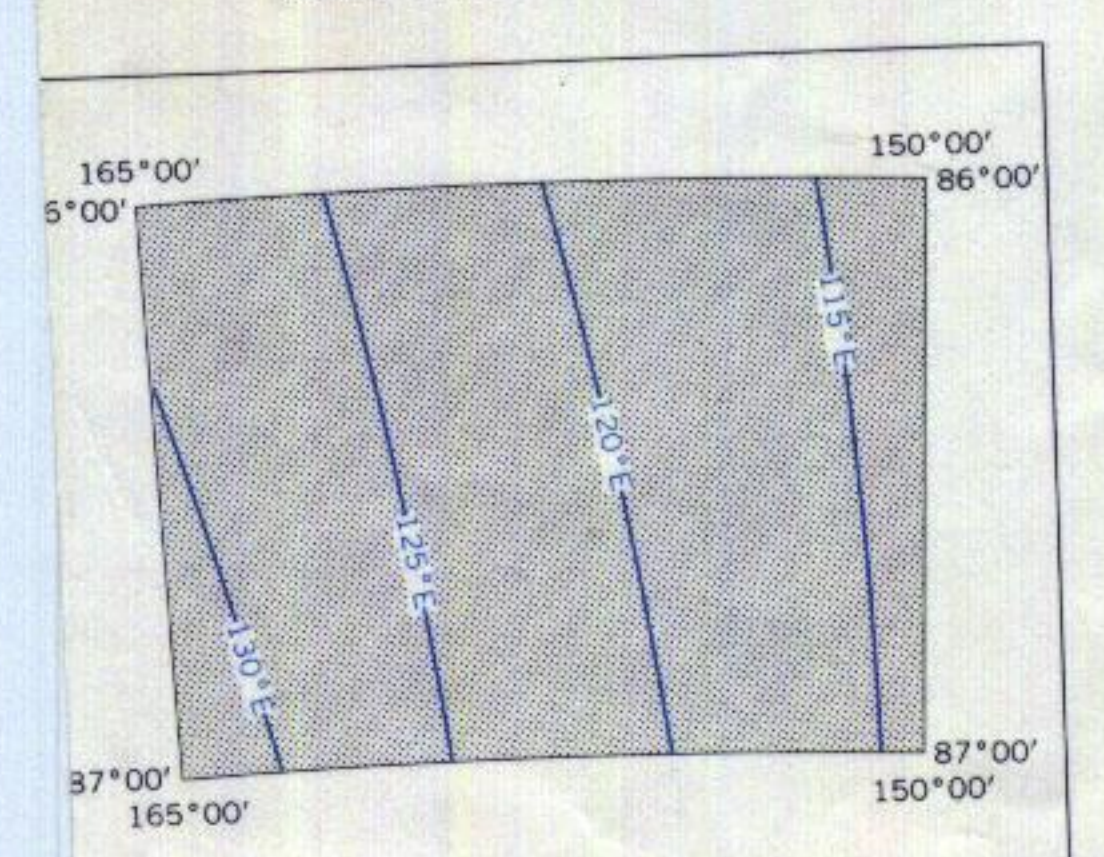
Mapped, edited, and published by the U. S. Geological Survey in cooperation with the National Science Foundation  
Control by U. S. Geological Survey  
Compiled in 1966 from U. S. Navy trimetrogon aerial photographs taken 1960-1964  
Names approved by U. S. Board on Geographic Names  
Absence of the crevasse symbol does not necessarily indicate a crevasse-free area

Polar Stereographic Projection—Standard Parallel 80° 14'  
CONTOUR INTERVAL 200 METERS—DATUM IS MEAN SEA LEVEL

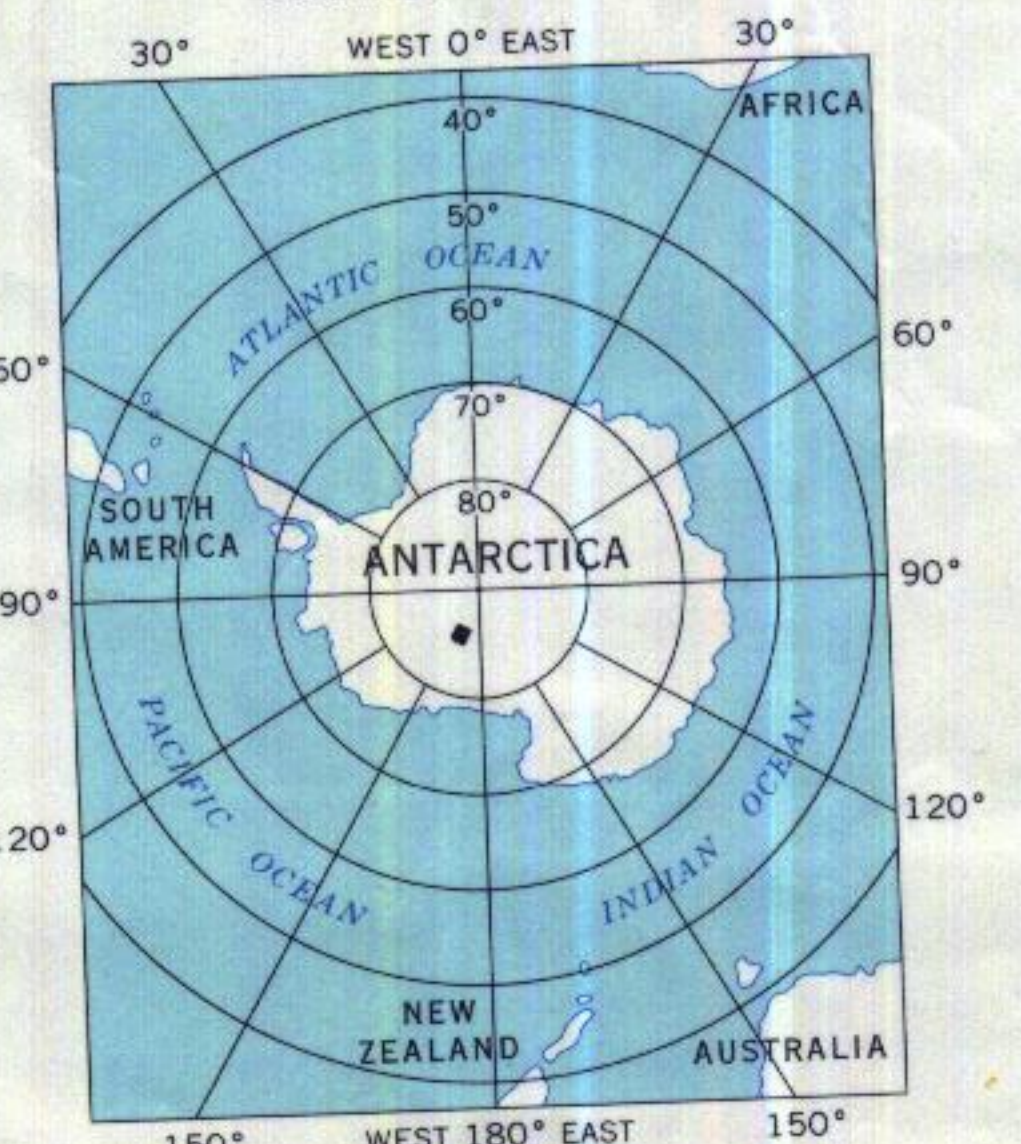
LEGEND

Contour lines (definite)		Astro control station	
Contour lines (approximate)		Survey control stations	
Contour lines (conjectural)		Traverse route with spot height	
Cliff or escarpment		Moraine	
Steep slope		Glacier	
Small hillocks		Crevasse	
Intersected elevations		Coastline under ice (definite; indefinite)	
Photogrammetric elevations		Ice shelf	
Ice thickness		Icebergs	
		Fast or bay ice	

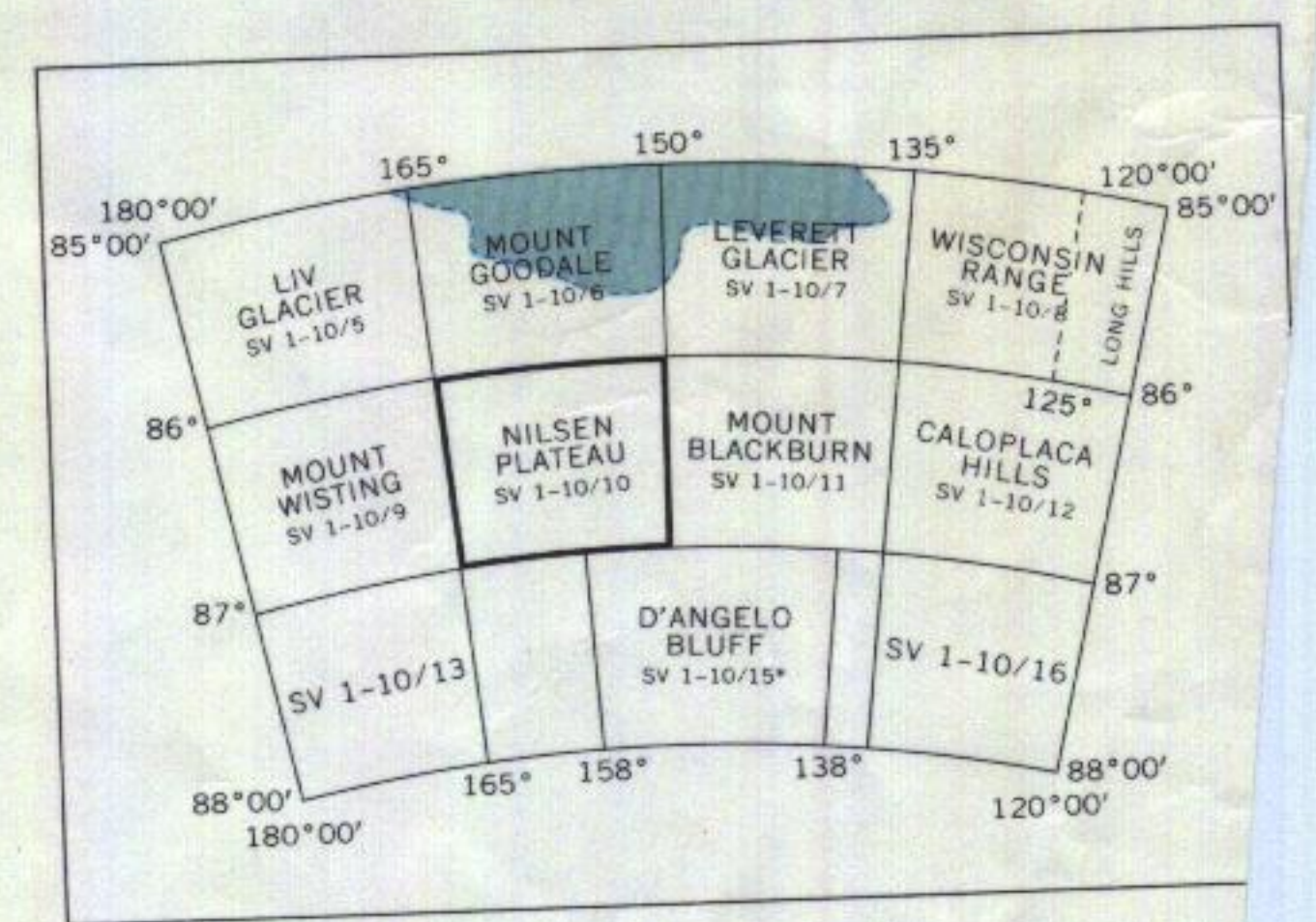
COMPILATION DIAGRAM



LOCATION DIAGRAM



INDEX TO ADJOINING SHEETS



Sheet numbering system based on International Map of the World  
Dashed outlines show coverage of previously published sheets, not on this system

**MISSION S-18**  
**1-31-69**  
**2-1-69**  
**COLOR**  
**EKTACHROME POSITIVE**

NILSEN PLATEAU  
ANTARCTICA  
SV 1-10/10  
S8600-W15000/1X15