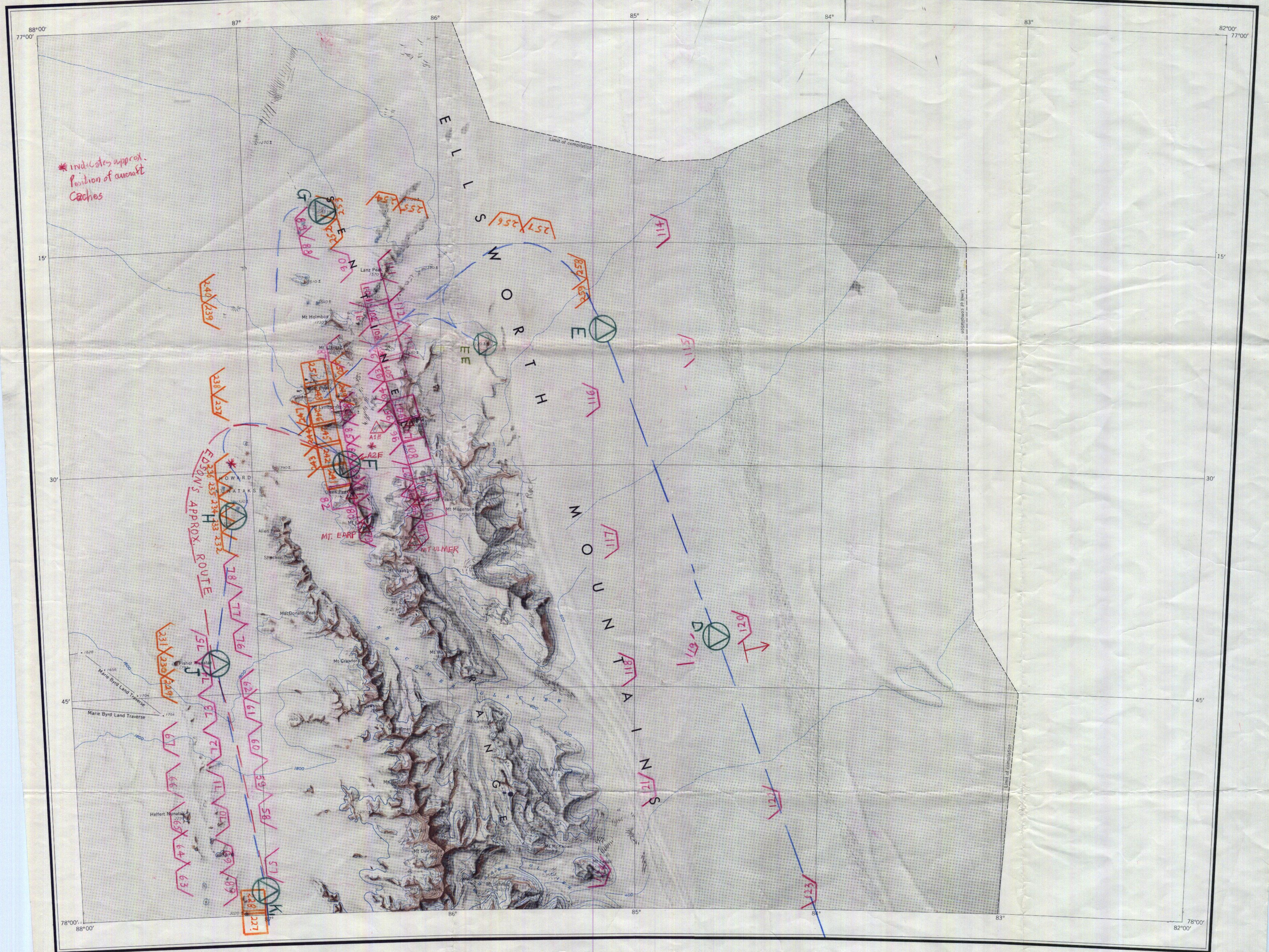


SIPLE / 75° 55' S
83° 55' W

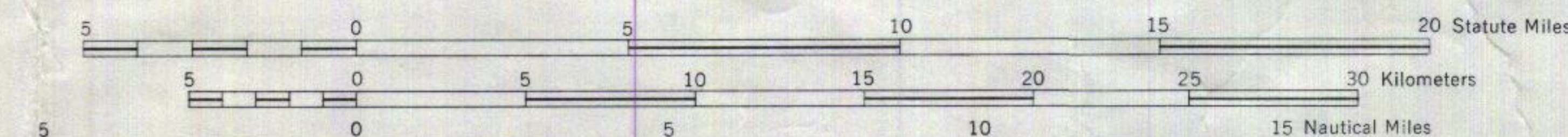
NEWCOMER GLACIER

ANTARCTICA
1:250,000 RECONNAISSANCE SERIES

UNITED STATES
DEPARTMENT OF THE INTERIOR
GEOLOGICAL SURVEY



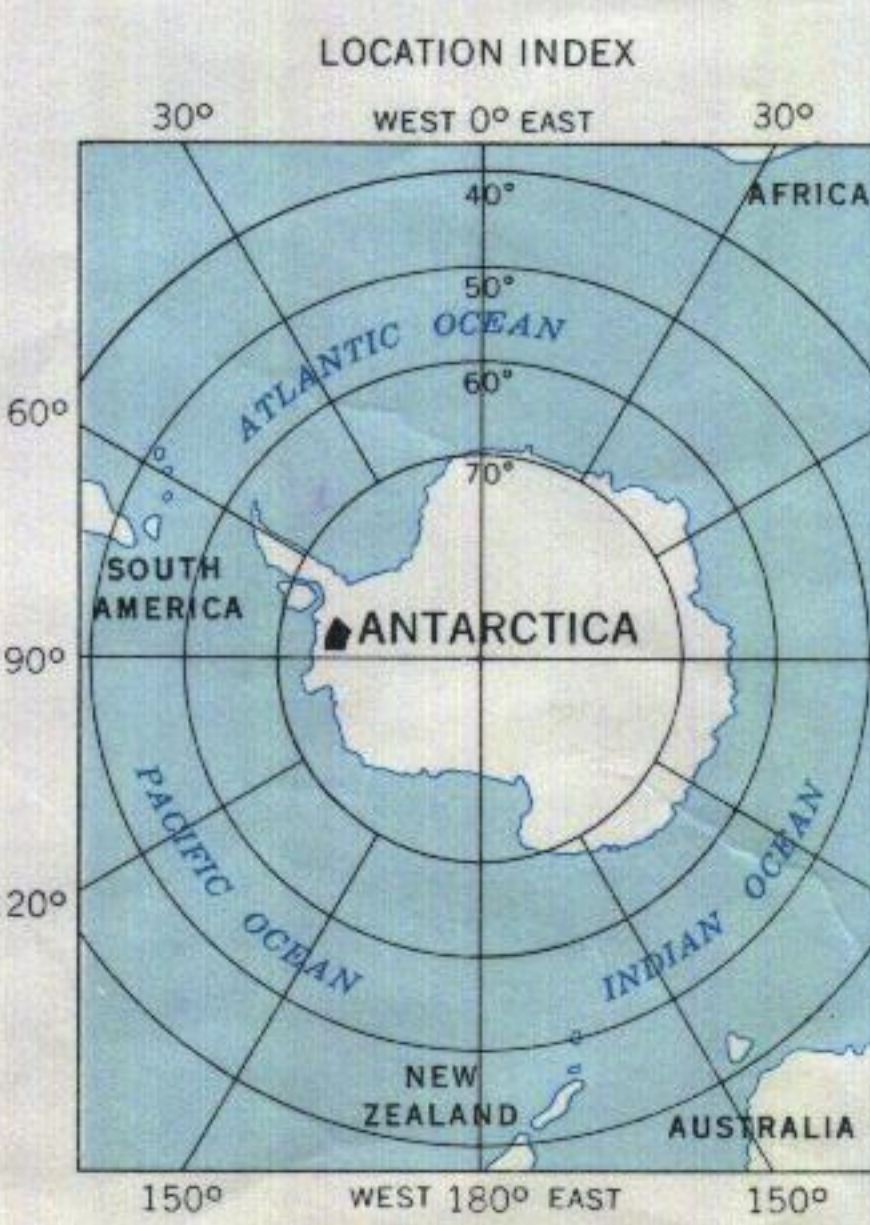
Scale 1:250,000



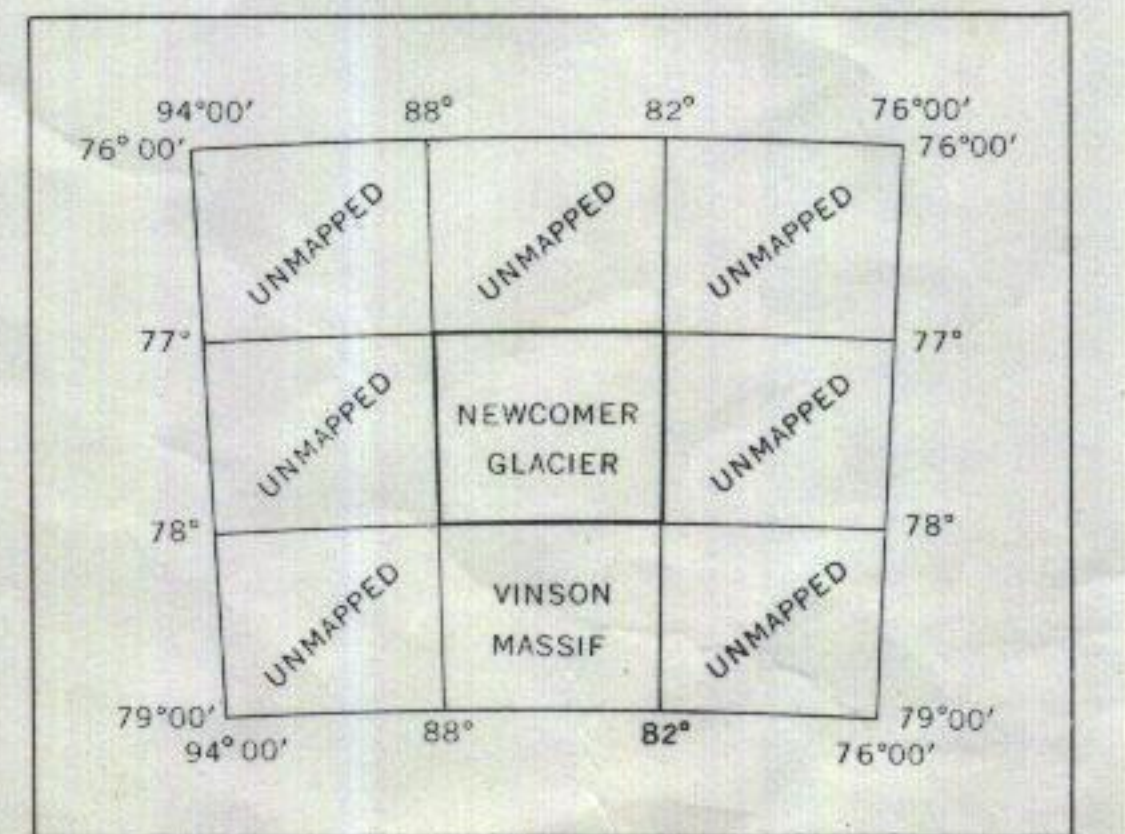
Lambert Conformal Conic Projection—Standard Parallels 76°4' and 79°20'
CONTOUR INTERVAL 200 METERS—DATUM IS MEAN SEA LEVEL

LEGEND

- Contours, index
- Contours, intermediate
- Approximate contours, index
- Approximate contours, intermediate
- Form lines
- Peaks (small nunataks); ice peaks
- Ice contours, index
- Ice contours, intermediate
- Approximate ice contours, index
- Approximate ice contours, intermediate
- Ice form lines
- Glacial moraine
- Pack ice; Icebergs
- Crevasses and stress lines

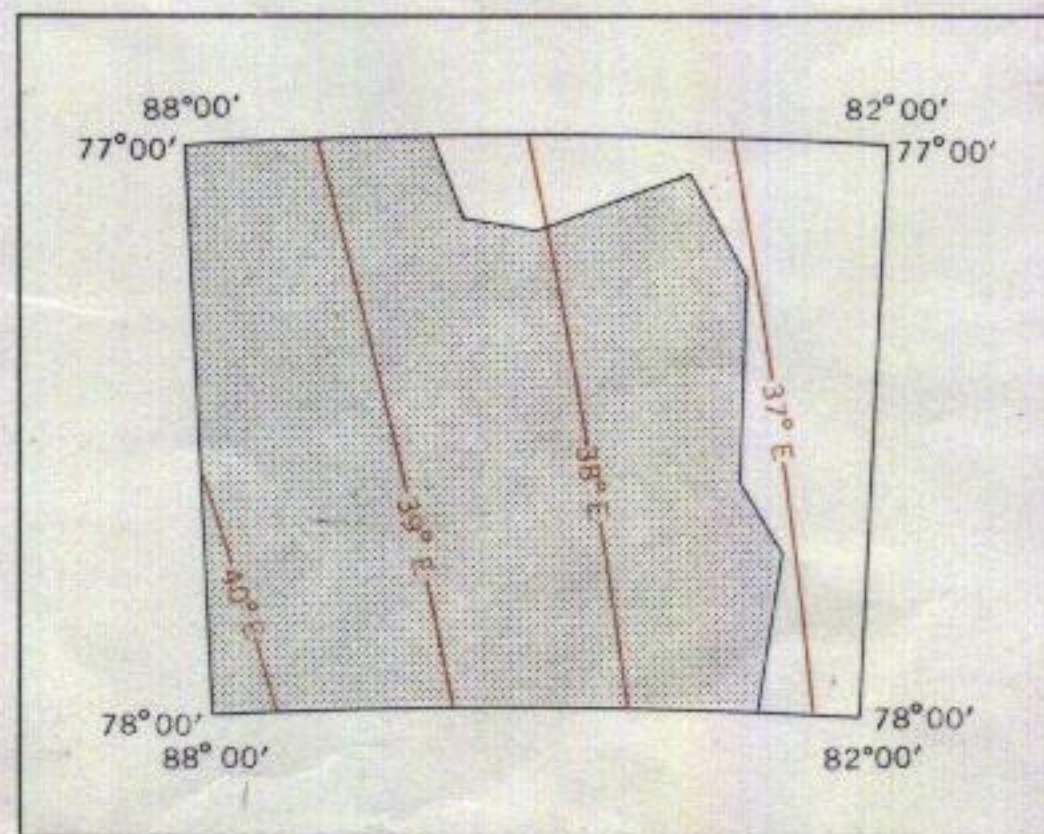


INDEX TO ADJOINING SHEETS



Mapped, edited, and published by the Geological Survey in cooperation with the National Science Foundation
 Compiled in 1961 from U.S. Navy trimetron photography 1959
 Control from Marie Byrd Land Traverse 1957, 1958 and 88th Meridian Air-Lifted Traverse 1959-1960 by University of Wisconsin
 Names approved by U.S. Board on Geographic Names
 Absence of the crevasse symbol does not necessarily indicate a crevasse-free area

COMPILATION DIAGRAM



Photogrammetric compilation
 Isogonic lines compiled from U.S.N.H.O. Chart 1706S, 1960