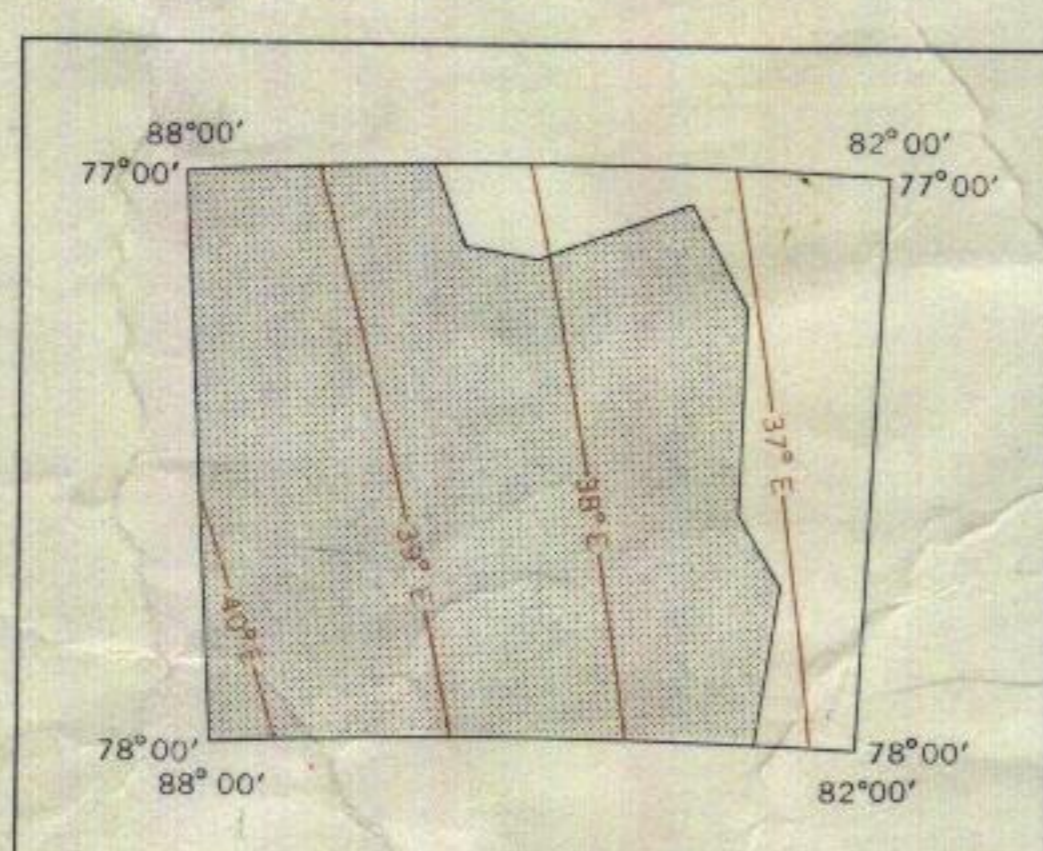
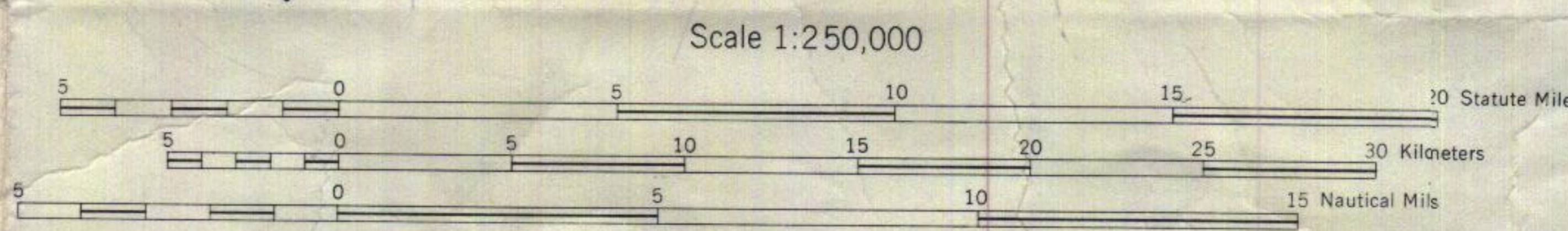


Mapped, edited, and published by the Geological Survey in cooperation with the National Science Foundation. Compiled in 1961 from U.S. Navy trimetrogon photography 1959. Control from Marie Byrd Land Traverse 1957-1958 and 88th Meridian Air-Lifted Traverse 1959-1960 by University of Wisconsin. Names approved by U.S. Board on Geographic Names. Absence of the crevasse symbol does not necessarily indicate a crevasse-free area.

COMPILATION DIAGRAM



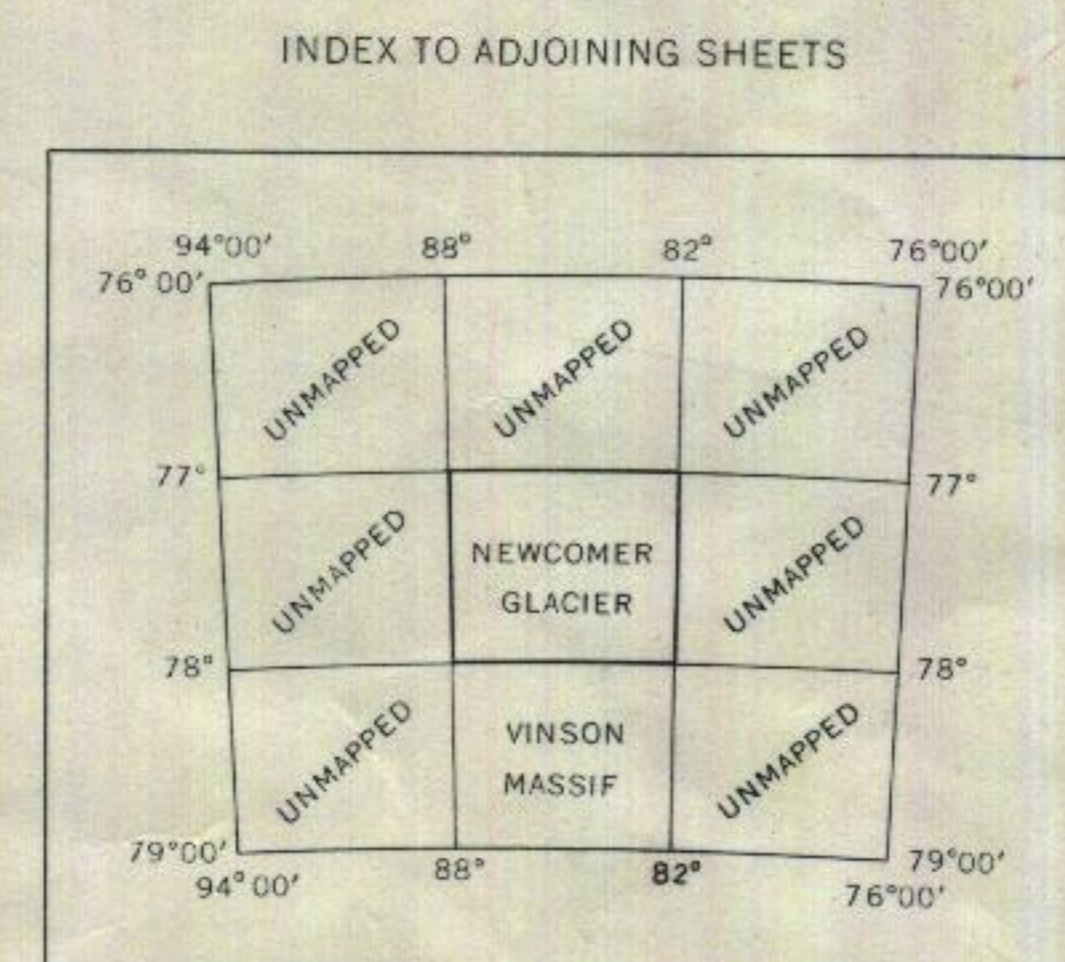
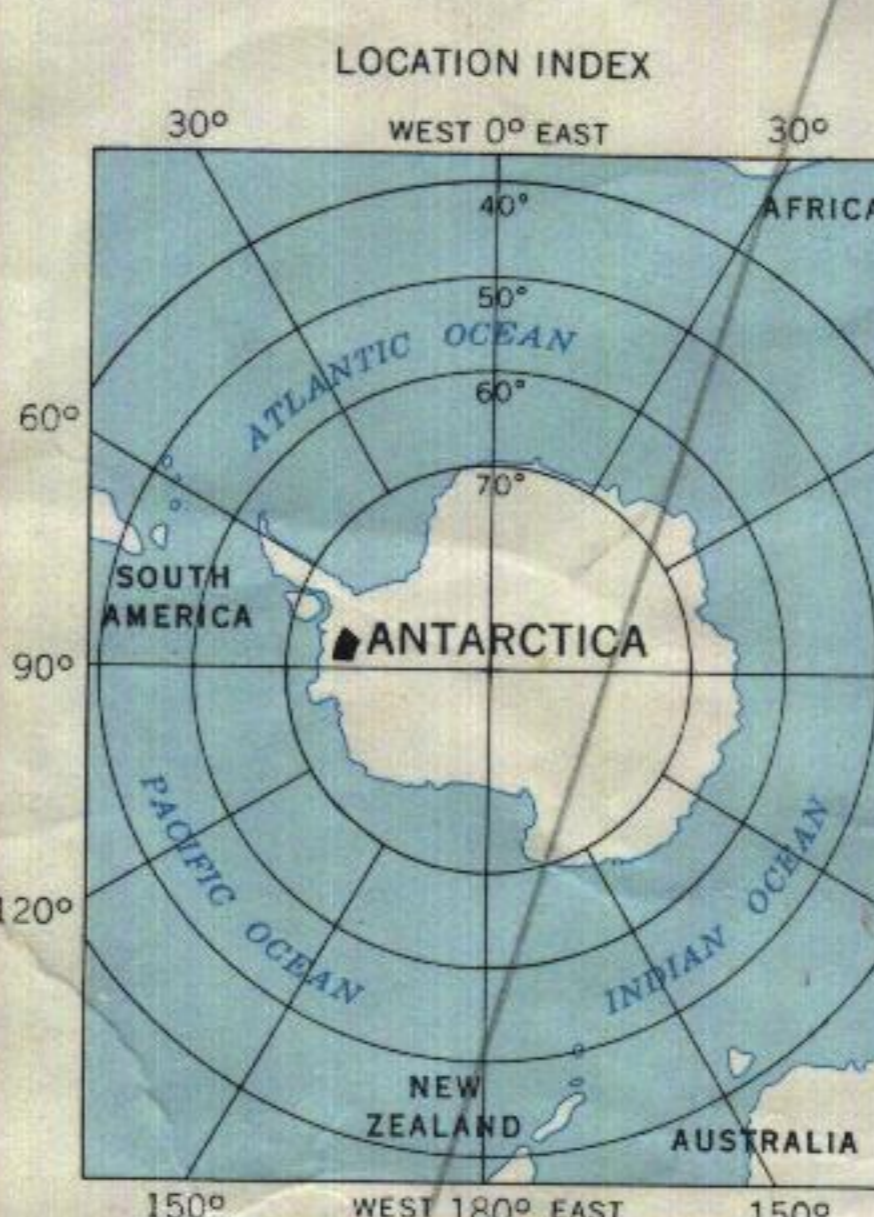
Photogrammetric compilation  
Isogonic lines compiled from U.S.N.H.O.  
Chart 1706S, 1960



Lambert Conformal Conic Projection—Standard Parallels 76°40' and 79°20'  
CONTOUR INTERVAL 200 METERS—DATUM IS MEAN SEA LEVEL

LEGEND

Contours, index	Ice contours, index	Glacial moraine
Contours, intermediate	Ice contours, intermediate	Pack ice; icebergs
Approximate contours, index	Approximate ice contours, index	
Approximate contours, intermediate	Approximate ice contours, intermediate	
Form lines	Ice form lines	Crevasse and stress lines
Peaks (small nunataks); ice peaks		



FOR SALE BY U. S. GEOLOGICAL SURVEY, WASHINGTON 25, D. C.

NEWCOMER GLACIER

NEWCOMER GLACIER  
ANTARCTICA  
S7700-W8200/146