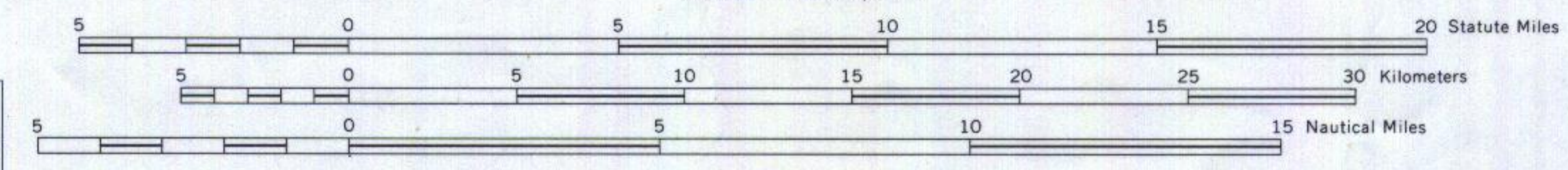
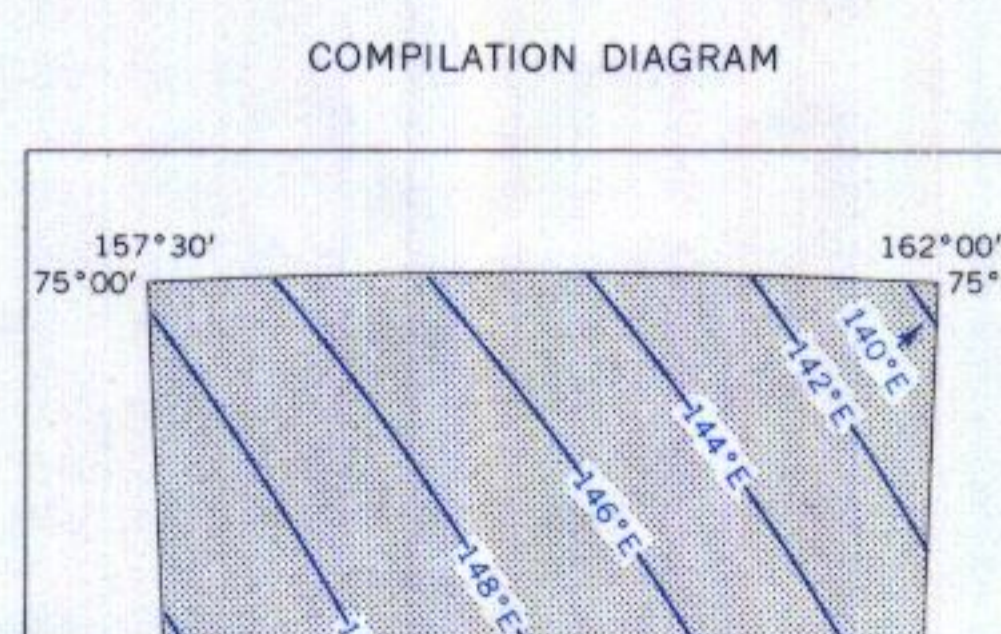
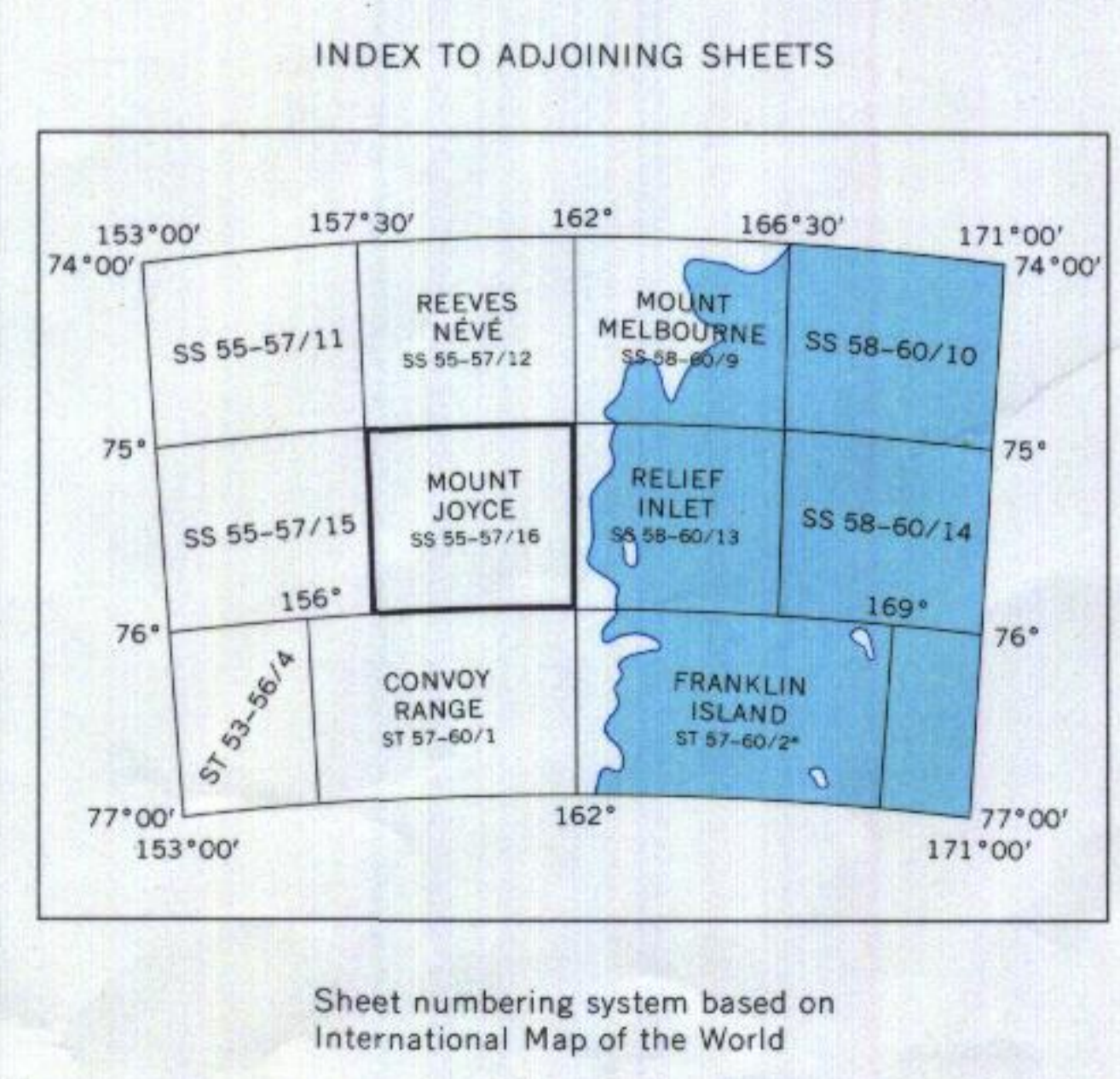
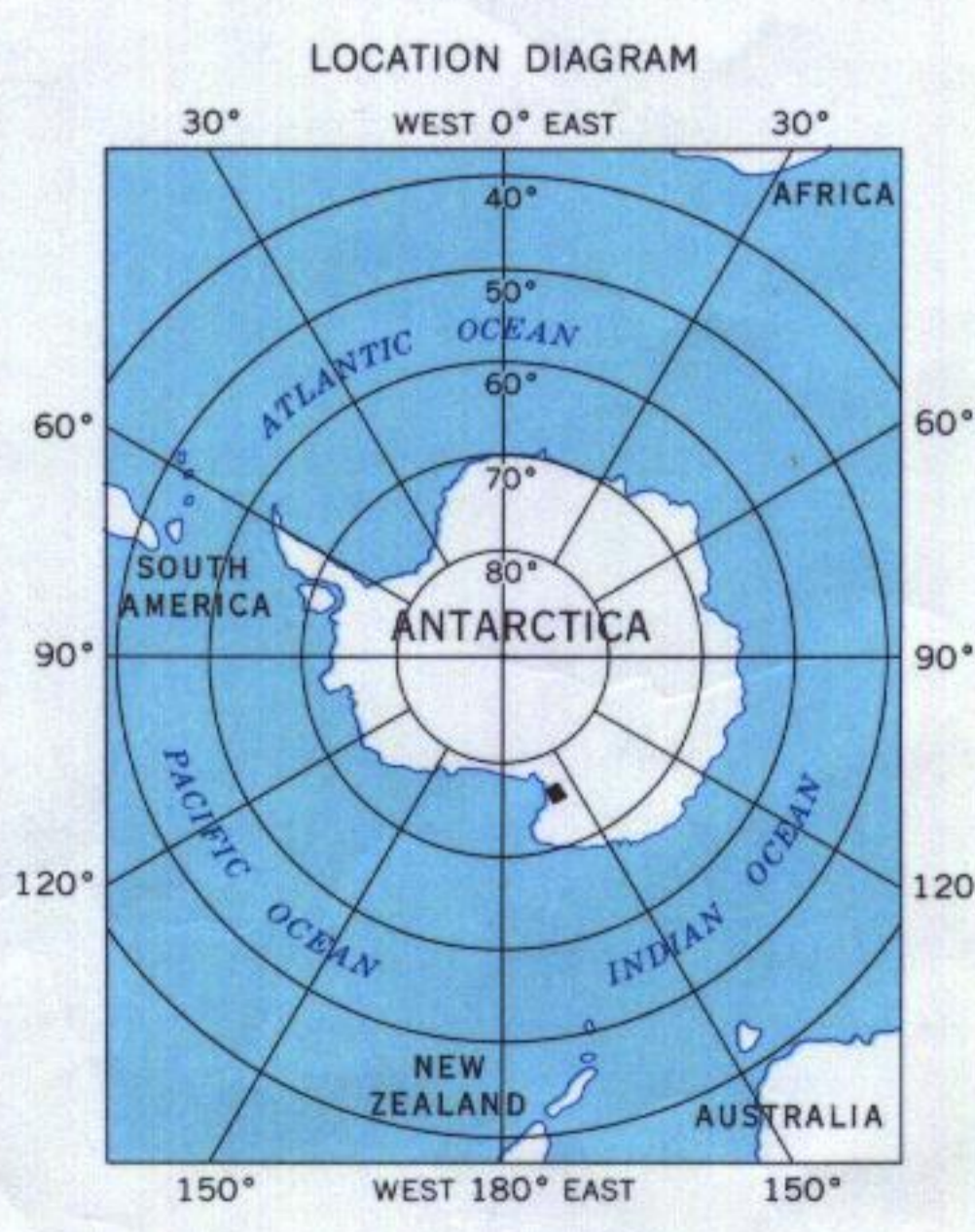


Mapped, edited, and published by the U. S. Geological Survey in cooperation with the National Science Foundation
Control by U. S. Geological Survey
Compiled in 1966 from U. S. Navy tricamera aerial photographs taken 1956-1962
Names approved by U. S. Board on Geographic Names
Absence of the crevasse symbol does not necessarily indicate a crevasse-free area



Lambert Conformal Conic Projection—Standard Parallels 72°40' and 75°20'
CONTOUR INTERVAL 200 METERS—DATUM IS MEAN SEA LEVEL



TMA NUMBER	FRAMES	FAN	HEIGHT	FOCAL LENGTH	DATE	TYPE
2936	1-112	V	20000	152.2	11-09-87	B&W
2938	1-159	V	20000	152.2	11-09-87	B&W *
2940	1-143	V	20000	152.2	11-09-87	B&W *

* Flight is approximately located between 155 and 157

LEGEND

- Astro control station
- Survey control stations
- Traverse route with spot height
- Moraine
- Glacier
- Crevasse
- Coastline under ice (definite; indefinite)
- Ice shelf
- Icebergs
- Fast or bay ice

FOR SALE BY U. S. GEOLOGICAL SURVEY, WASHINGTON, D. C. 20242

MOUNT JOYCE
ANTARCTICA
SS 55-57/16
S7500-E15730/1X4.5

1987